

NEW LINED BRAKE SHOES AND KITS



New Brake Shoes

- **GUARANTEED** minimum of 20% longer friction and drum life with STEMCO new brake shoes versus remanufactured shoes.
- **OEM QUALITY, SAFETY AND DEPENDABILITY** with STEMCO new brake shoes. No worries of not meeting the TMC specification (RP 605B) for table condition and minimum thickness which can lead to lost braking power, friction cracking, loose rivets and/or rust jacking.
- **PRE-FORMED "ROLLED" TABLES** provide a flatter mating surface for brake lining and stress-free welds. Competitors form and weld tables in the same step, and then use a process known as coining to shape the welded shoe which may cause weld stress.
- **E-COATING** prevents rust before it starts by using electrical current to deposit ("Bond") the paint to the shoe, which helps to resist rust jacking. STEMCO Brake Products shoes are environmentally tested to withstand 1,000 hours of salt spray testing.
- **HEAT TREATING*** roller and/or anchor ends hardens the steel and prevents distortion and mushrooming. Such wear, often found on competitor relined and new shoes, can result in slippage and cause excessive wear, shortening the life of your shoes.

Hardware Kits

- **RUST RESISTANT** design includes stainless steel bushings, zinc-chromate coated rollers and heavy duty E-coated springs to improve the dependability of your brakes.

**OEM replacement shoes have heat treated roller ends. Heat treating roller and anchor ends available on select shoes which are offered on a special order basis.*



HORIZON SP[®] CREST XL[®] VISTA HP[®] ULTRA PEAK[®] BRT ULTRA PEAK[®] FT



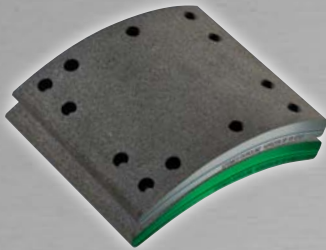
High performance friction with superior service and support. Contact us for brake training.

STEMCO
BRAKE PRODUCTS™

www.stemcobreakeproducts.com

High Performance Brake Linings

HORIZON SP®

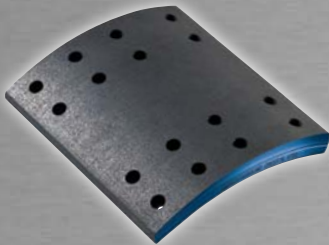


The value and performance choice for highway applications.

Horizon SP® was specially designed to be a cost effective solution for your long-haul needs. Horizon SP® is the standard performance friction formulation for normal-duty cycles, operating environments and loads.


AXLE RATING	APPLICATION(S)
Horizon SP20® 20,000 lbs.	
Horizon SP23® 23,000 lbs.	

CREST XL®

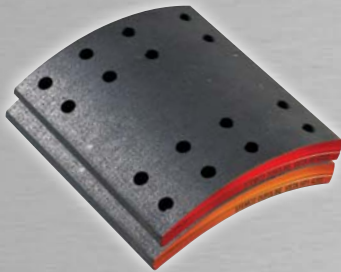


Extra life choice for demanding highway applications.

This unique brake lining is perfect for moderate to heavy-duty long-haul applications. Crest XL® exceeds the performance of the competition in the same category due to its superior formulation combined with the Wave Process.






AXLE RATING	APPLICATION
Crest XL® 20,000 lbs.	

VISTA HP®

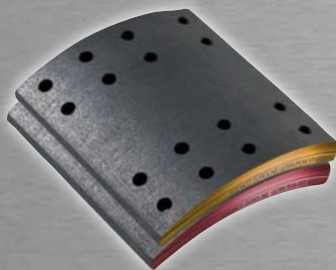


The high performance choice for demanding applications.

If you are looking for superior performance for demanding applications, then look no further. Vista HP® offers smooth, noise-free and stable stopping power over a wide range of temperatures, pressure and speed variations.








AXLE RATING	APPLICATION(S)
Vista HP® 23,000 lbs.	   
Vista HP1® 25,000 lbs.	

ULTRA PEAK®



Superior technology for outstanding performance.

Ultra Peak® incorporates the finest raw materials and superior technology to assure maximum performance. This high-quality brake lining has been specially formulated to run quieter and extend lining life and drum life with excellent flexural strength which eliminates failure mode of friction cracking.

AXLE RATING	APPLICATION(S)
Ultra Peak® BRT 23,000 - 26,000 lbs.	   
Ultra Peak® FT 26,000 - 29,000 lbs.	  

Catch The Wave

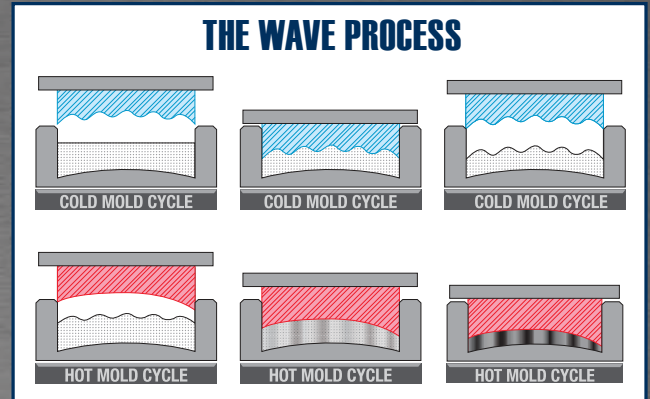
Our patented and revolutionary “Wave Process” assures higher performance and a longer life along with a lower noise level. This patented technology begins with the cold mold cycle, which creates the unique wave pattern. Hot molding then forces the waves to condense under heat and pressure. Aligning the friction density into column structures assures less heat susceptibility, which results in quieter, longer lasting brakes.

B-Lock™

B-Lock is a patented rust preventative technology that eliminates any possibility of early deterioration of the brake shoe table. STEMCO LP guarantees our new brake shoes using Rome Steel and B-Lock assembled in Rome, GA against ‘Rust Jacking’ for the life of the original STEMCO lining. If B-Lock should fail, the brake shoe assembly will be replaced at our cost.

Platinum Performance System™

If STEMCO new or relined brake shoes are used in conjunction with the Platinum Performance System,™ lined shoes that have been exposed to oil contamination will be covered or replaced. For STEMCO brakes not covered by the PPS System, the length of the lining warranty against oil contamination will be the warranty period of the STEMCO seal. Horizon SP® brake linings are excluded from oil contamination coverage.



Lined Shoe & Wheel Kit Part Numbers

Top Mover Reference

LINED SHOE TOP MOVER REFERENCE		
LINED SHOE PART NO.	STANDARD LINED SHOE PART NO.	DESCRIPTION
HORIZON® SP20 & SP23		
LS4515QSP20	LSS4515QSP20	16.5x7 MERITOR Q
LS4707QSP20	LSS4707QSP20	16.5x7 MERITOR Q+
LS4709E2SP20	N/A	16.5x7 EATON ES 2 ND GEN
LS4515QSP23	LSS4515QSP23	16.5x7 MERITOR Q
LS4707QSP23	LSS4707QSP23	16.5x7 MERITOR Q+
LS4709E2SP23	N/A	16.5x7 EATON ES 2 ND GEN
CREST XL®		
LS4515QCXL	LSS4515QCXL	16.5x7 MERITOR Q
LS4702QCXL	N/A	15x4 MERITOR Q+
LS4707QCXL	LSS4707QCXL	16.5x7 MERITOR Q+
LS4709E2CXL	N/A	16.5x7 EATON ES 2 ND GEN
VISTA HP®		
LS4515QVHP	LSS4515QVHP	16.5x7 MERITOR Q
LS4702QVHP	N/A	15x4 MERITOR Q+
LS4707QVHP	LSS4707QVHP	16.5x7 MERITOR Q+
LS4709E2VHP	N/A	16.5x7 EATON ES 2 ND GEN
ULTRA PEAK®		
LS4515QBRT	LSS4515QBRT	16.5x7 MERITOR Q
LS4702QBRT	N/A	15x4 MERITOR Q+
LS4707QBRT	LSS4707QBRT	16.5x7 MERITOR Q+
LS4709E2BRT	N/A	16.5x7 EATON ES 2 ND GEN
LS4515QFT	LSS4515QFT	16.5x7 MERITOR Q
LS4702QFT	N/A	15x4 MERITOR Q+
LS4707QFT	LSS4707QFT	16.5x7 MERITOR Q+
LS4709E2FT	N/A	16.5x7 EATON ES 2 ND GEN

WHEEL KIT TOP MOVER REFERENCE		
WHEEL KIT PART NO.	STANDARD WHEEL KIT PART NO.	DESCRIPTION
HORIZON® SP20 & SP23		
WK4515QSP20	WKS4515QSP20	16.5x7 MERITOR Q
WK4707QSP20	WKS4707QSP20	16.5x7 MERITOR Q+
WK4709E2SP20	N/A	16.5x7 EATON ES 2 ND GEN
WK4515QSP23	WKS4515QSP23	16.5x7 MERITOR Q
WK4707QSP23	WKS4707QSP23	16.5x7 MERITOR Q+
WK4709E2SP23	N/A	16.5x7 EATON ES 2 ND GEN
CREST XL®		
WK4515QCXL	WKS4515QCXL	16.5x7 MERITOR Q
WK4702QCXL	N/A	15x4 MERITOR Q+
WK4707QCXL	WKS4707QCXL	16.5x7 MERITOR Q+
WK4709E2CXL	N/A	16.5x7 EATON ES 2 ND GEN
VISTA HP®		
WK4515QVHP	WKS4515QVHP	16.5x7 MERITOR Q
WK4702QVHP	N/A	15x4 MERITOR Q+
WK4707QVHP	WKS4707QVHP	16.5x7 MERITOR Q+
WK4709E2VHP	N/A	16.5x7 EATON ES 2 ND GEN
ULTRA PEAK®		
WK4515QBRT	WKS4515QBRT	16.5x7 MERITOR Q
WK4702QBRT	N/A	15x4 MERITOR Q+
WK4707QBRT	WKS4707QBRT	16.5x7 MERITOR Q+
WK4709E2BRT	N/A	16.5x7 EATON ES 2 ND GEN
WK4515QFT	WKS4515QFT	16.5x7 MERITOR Q
WK4702QFT	N/A	15x4 MERITOR Q+
WK4707QFT	WKS4707QFT	16.5x7 MERITOR Q+
WK4709E2FT	N/A	16.5x7 EATON ES 2 ND GEN

Example

[A] PREFIX	[D] TYPE FRICTION
LS = Lined Shoe	SP20 = Horizon® SP20
*LSS = Standard Lined Shoe	SP23 = Horizon® SP23
WK = Wheel Kit	CXL = Crest XL®
*WKS = Standard Wheel Kits	VHP = Vista HP®
HK = Boxed Hardware Kit	VHP1 = Vista HP® 1
BHK = Bagged Hardware Kits	BRT = Ultra Peak® BRT
AHK = Crated Hardware Kits	FT20 = Ultra Peak® FT20
	FT23 = Ultra Peak® FT23
	FT = Ultra Peak® FT
[B] FMSI	[E] B-LOCK
Friction Material Standards Institute Number	
[C] SHOE IDENTIFICATION	
BQ = Bendix Q (FORD Cargo)	E2 = Eaton 2nd Gen
DFC = Dana Fast Change	Q = Q Style or Q+
DP = Dana Closed Ends	QM = Mack Q Style High Mount
DX = Dexter PQ	QR = Steer with Relocated Hole
E = Eaton	SF = Standard Forge
EH = Eaton High Mount	X3 = Fruehauf XEM3

[A]	[B]	[C]	[D]	[E]
WKS	4515	Q	CXL	BL

* Material savings shoe offers the same high quality and performance at a reduced price.

Application Reference

APPLICATION			
AXLE RATING	OVER THE ROAD	BUS, REFUSE, AND/OR TRANSIT	HEAVY HAUL AND/OR SPECIALTY
20,000	Horizon SP20® Crest XL®		
23,000	Horizon SP23® Vista HP®	Ultra Peak® BRT Vista HP®	Vista HP®
25,000			Vista HP® 1
26,000		Ultra Peak® BRT	Ultra Peak® BRT Ultra Peak® FT
29,000		Ultra Peak® FT	Ultra Peak® FT

Note: Table is for reference purposes only. For proper brake lining application, variables such as actual vehicle weight and A/L factor must be considered.